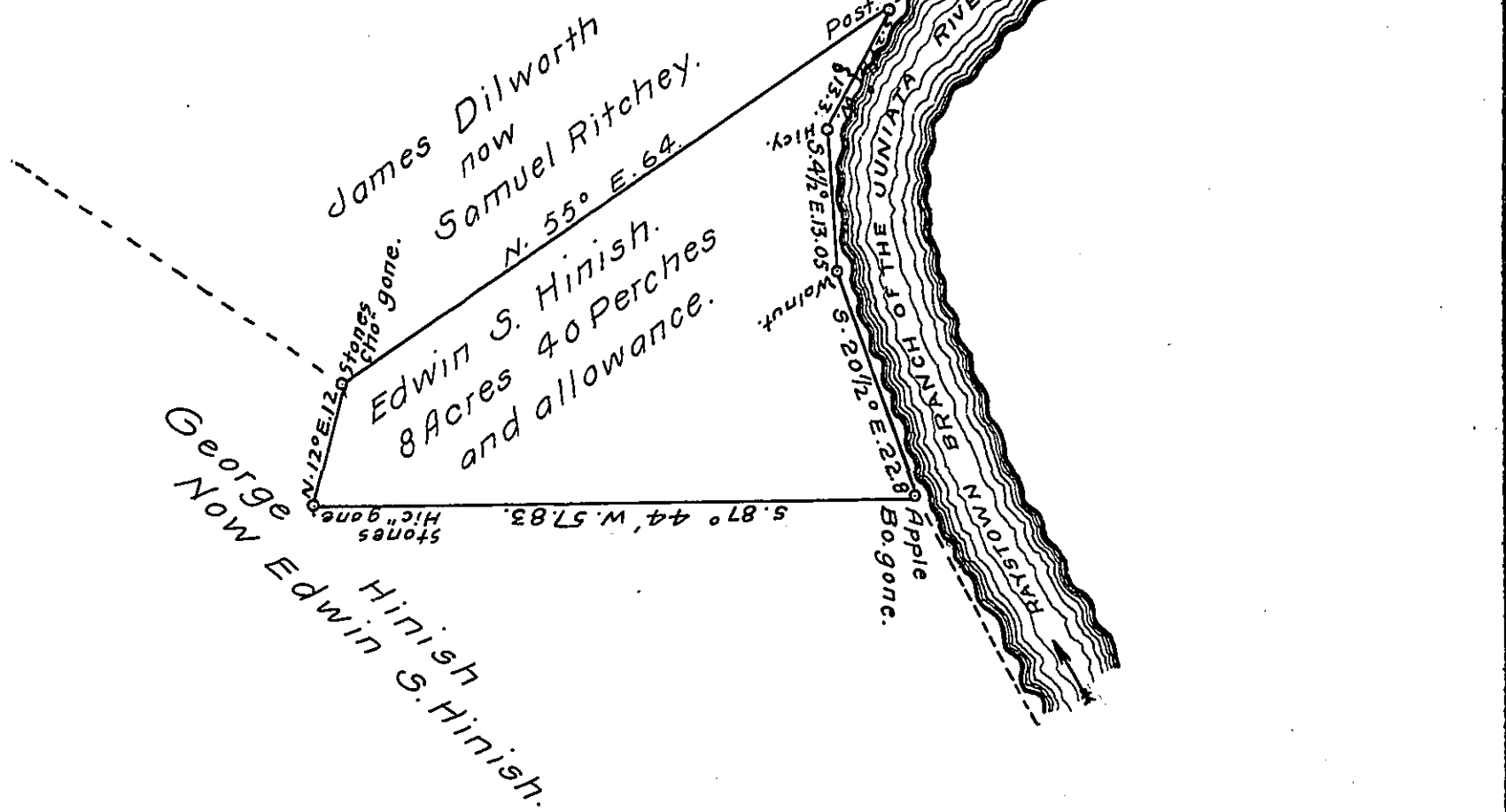
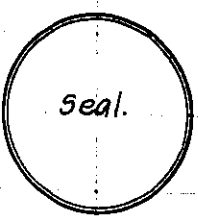


45



Scale 20 Rods to one inch.

A Draft of a tract of land situated in the Township of Hopewell and County of Bedford, containing Eight (8) acres, 40 perches and allowance of six per cent for roads, etc. Surveyed the 2nd day of January, 1913, in pursuance of a warrant granted to Edwin S. Hinish, dated the 18th day of December, 1912.



To Hon. Henry Houck,
Secretary of Internal Affairs. } G.W. Cunard,
County Surveyor.

IN TESTIMONY that the above is a copy of the original remaining on file in the Department of Internal Affairs of Pennsylvania, made conformably to an Act of Assembly approved the 16th day of February, 1833, I have hereunto set my Hand and caused the Seal of said Department to be affixed at Harrisburg, this twenty second day of May, 1914.

Henry Houck,
Secretary of Internal Affairs.